

## SANTA CLARA UNIVERSITY SCHOOL OF LAW 2018 GENEVA SUMMER PROGRAM



### Welcome to Santa Clara Law's 2018 summer program in Geneva!

As Program Director I am looking forward to an exciting summer with you in one of the capitals of international law, Geneva!

This Newsletter should get you started in thinking about flights, airport transfer and transit, and fun things to do in and around Geneva during summer. As you already know, our program will take place on the Webster University campus in the beautiful lakeside community of Bellevue. We will meet there for our first day of classes on Tuesday, June 12<sup>th</sup> at 9.00am. I will give you our local contact information at our Orientation, but meanwhile feel free to email me at [cjosi@scu.edu](mailto:cjosi@scu.edu).

### GETTING ORIENTED

#### Our mandatory Orientation

There will be a **mandatory** orientation session at 5:00 PM on Monday, June 11<sup>th</sup>, 2018 on the Webster University campus. We will meet out on the main patio behind the Living and Learning Center, LLC, at the Webster University (see campus map on Page 4 of this Newsletter), and after a brief tour of the campus and facilities, will have a welcome dinner.

#### Arriving in Geneva & Transportation

If holding a US passport, you should have no problem getting through immigration and customs. You are a visitor in Switzerland, and you should very easily get a tourist or visitor's stamp in your passport.



*Free Rail Ticket at Geneva Airport!*

In the baggage collection area, you may want to take advantage of one of the few free items available for tourists in Switzerland - a free public transportation card valid for 80 minutes. Since it takes about 6 minutes to get to the city center from the airport, unless you plan to take a taxi, you will certainly find this useful.

Once you have passed through immigration and customs, you should plan to get some **local currency** (Swiss Franc, CHF) before you exit the airport. [Note: Unless absolutely unavoidable, do not use your credit card to withdraw cash – you will be hit with high interest charges, often on your entire credit card balance, accruing from the time of withdrawal]. The Swiss Franc CHF is the local currency (not the Euro). You will always receive change in Swiss Francs (but note, ticket vending machines don't give change).

In addition to getting local currency, you may find it useful to rent a **cell phone** or buy a SIM card for your universal cell phone at the airport.

## Getting to your Residence & Transportation

The airport rail station has direct access to the Arrivals level, and all trains from the airport stop at the main train station in Geneva, the Geneva-Cornavin station (city center). While at the Geneva-Cornavin station, you are strongly advised to try to get a monthly transit pass, regardless of where you are staying: (about CHF 45 under 25 years old, about CHF 70 if older). **Traveling without a ticket is not an option**, as you will pay hefty fines (although it may seem the ticket is not always checked, if caught, you will pay dearly for ticketless travel).

Whether you are staying at the Webster accommodation at either Les Berges du Rhône, or the Living & Learning Center (LLC), read on.

Webster has arranged for Assistant Residence Coordinators or Resident Assistants (ARC) at each residence to make sure that one at least will be on duty and ready to welcome you when you arrive, no matter what time of day or night. The ARC "on duty" will give you your keys, show you the room, and provide all necessary information about the residence.

## Directions from the airport to Les Berges du Rhône:

Les Berges du Rhône is located at: 2 rue des Deux-Ponts, 1205 Geneve

Take any train to Geneve Cornavin (main train station).

Get off the train, go down the escalator and take a left at the bottom. You will then be facing another escalator going downwards; DO NOT take it, instead follow the path on your right hand side (by Greens and the pizza place) and exit the station. You are right in front of the tram # 14 stop. Take tram # 14 going towards P+R Bernex. Get off at the 4th stop called Palladium, which is right along the river side. The ride is 9 minutes.

Keep walking in the same direction as the tram along the river and the residence is 100m down the street (rue des Deux-Ponts #2). You will have to use the under path to cross the bridge and reach the other side. Once you walk up the under path, you will be facing the residence.



*Les Berges du Rhône*

#### **Directions from the airport to campus residence LLC:**

The Living and Learning Center (LLC) is located at 9 route de Collex, 1293 Bellevue.

Take any train to Geneve Cornavin (main train station).

Get off that train and go to platform 1 to take the Regio train direction Coppet which departs every 3 or 33 minutes after the hour Monday through Friday (only once an hour on Sunday).

Get off at the fourth stop called Genthod-Bellevue. The ride is 7 minutes.

The train stop is at the lower end of the campus. The main building, the LLC, is visible from there.

Go down the stairs and underneath the railway line. You will be on campus.

Here's what it looks like:



*The Living and Learning Center*



Here's a map of the campus.



### **Other alternatives: Taxi**

- To Les Berges du Rhône: approx. 15 minutes, estimated about CHF 50. Tell the driver you want to go to: 2 rue des Deux-Ponts, 1205 Geneve
- To LLC: approx. 6 minutes, about CHF 50. Tell the driver you want to go to 9 route de Collex, 1293 Bellevue (lower parking)

### **Settling in**

[This link](#) has some useful information on grocery stores (including tips such as weighing your own groceries). Many stores are closed on Sundays, so do some shopping - at least for essentials - on Saturday.

### **Directions from Les Berges to Campus**

The commute to campus from Les Berges is on tram and train. The tram stop is less than 100 meters away from the residence and takes you to the main train station in 10 minutes. From the train station, the regional train takes you to Webster campus in 7 minutes. The train stop is right at the bottom of the campus. The commute takes approximately 25 minutes.

The last train departs at 00.03am (just past midnight) from the train station. If you miss that train, either wait for the next one at 5.03am or take a taxi. There are also night buses (Noctambus) leaving at 1:45am and 3:35am from the train station.

All students, whether staying at Les Berges or at the LLC on campus, are strongly advised to get a monthly pass (about CHF 45 under 25 years old, about CHF 70 if older). Pick this up as close to arrival – get information at the airport, or the Geneve Cornavin (main train station).

Learn more about getting around in Geneva at <http://www.expatarrivals.com/switzerland/geneva/getting-around-in-geneva>

### **Bus & Train**

You will find a bus plan at

<http://www.tpg.ch/fr/web/guest>

... and Train information and a schedule at:

<http://www.sbb.ch/en/home.html>

## OUR CLASSES AND SCHEDULE

Classes start on Tuesday, June 12<sup>th</sup> at 9am. All classes are held from 9:00am-12:00pm, during the first week Tuesday through Friday, and the remaining three weeks Monday through Thursday. The schedule (see below) will allow you to travel Thursday evening through the weekend (except for the first week). However, please note that we have several excellent, mandatory, site visits on some afternoons during the week. Please pay attention to the dates and times of the site visits, details of which will be provided later.

### **2018 Santa Clara University School of Law** **Geneva Summer Abroad Program**

**Course Title: Public International Law, Human Rights Law, Humanitarian Law, & Int'l IP Law**  
**Dates and Units: June 12 – July 6, 2017 (5 units)**

Geneva, the birthplace of the international human rights movement, and the European headquarters for the United Nations, is home to Santa Clara Law's summer program in public international law. For a four-week period, students are taught select aspects of Public International Law, Humanitarian Law, Human Rights Law, and International Intellectual Property Law. The topics of study within each of these areas of law include:

**Week 1: Public International Law** - Sources of International Law, International Responsibility, Peaceful Settlement of International Disputes;

**Week 2: International Human Rights Law** - Enforcement Mechanisms, Regional Systems, Alien Tort Statute and the future of Human Rights.

**Week 3: International Humanitarian Law** - Classification of Armed Conflicts, Protection of Victims of Armed Conflicts, Implementation of IHL, IHL and Human Rights.

**Week 4: International Intellectual Property Law** - Traditional Knowledge, Traditional Cultural Expressions and Genetic Resources, Enforcement of Intellectual Property Rights, counterfeiting and piracy, Resolution of IP disputes through for a such as the Uniform Domain Name Dispute Resolution Policy, IP and Development.

In addition to classroom instruction, students will have the opportunity to gain insight into the workings of several UN and international organizations by visits to organizations such as the United Nations Headquarters, World Trade Organization, World Intellectual Property Organization, World Health Organization, International Committee of the Red Cross, and the Geneva International Centre for Humanitarian Demining. Most likely, students will also have the opportunity to attend a hearing of the Human Rights Committee during week 3 or 4 of the program.

Further information about Santa Clara's summer program in Geneva can be found [here](#).

## **COURSE SCHEDULE June 12 - July 6, 2018 (5 units)**

### **WEEK 1 (June 12-15) Public International Law**

<b>Mon, June 11</b>	<b>Tue, June 12 9 am - 12:00</b>	<b>Wed, June 13 9 am - 12:00</b>	<b>Thu, June 14 9 am - 12:00</b>	<b>Fri, June 15 9 am - 12:00</b>
<b>FREE</b>	<b>Public International Law</b>  [Prof. Sandra Krahenmann]	<b>Public International Law</b>  [Prof. Sandra Krahenmann]	<b>Public International Law</b>  [Prof. Sandra Krahenmann]	<b>Public International Law</b>  [Prof. Sandra Krahenmann]
	<b>Break</b>	<b>Break</b>	<b>Break</b>	<b>Break</b>
5pm Welcome session (meeting at Webster)	<b>Site Visit (Tentative)</b>		<b>Site Visit (Tentative)</b>	

### **WEEK 2 (June 18-21) International Human Rights Law**

<b>Mon, June 18 9 am - 12:00</b>	<b>Tue, June 19 9 am - 12:00</b>	<b>Wed, June 20 9 am - 12:00</b>	<b>Thu, June 21 9 am - 12:00</b>	<b>Fri, June 22</b>
<b>International Human Rights Law</b>  [Prof. Francisco Rivera]	<b>International Human Rights Law</b>  [Prof. Francisco Rivera]	<b>International Human Rights Law</b>  [Prof. Francisco Rivera]	<b>International Human Rights Law</b>  [Prof. Francisco Rivera and Prof. Claudia Josi]	<b>FREE</b>
<b>Break</b>	<b>Break</b>	<b>Break</b>	<b>Break</b>	
<b>Site Visit (Tentative)</b>		<b>Site Visit (Tentative)</b>		

### WEEK 3 (June 25-28) International Humanitarian Law

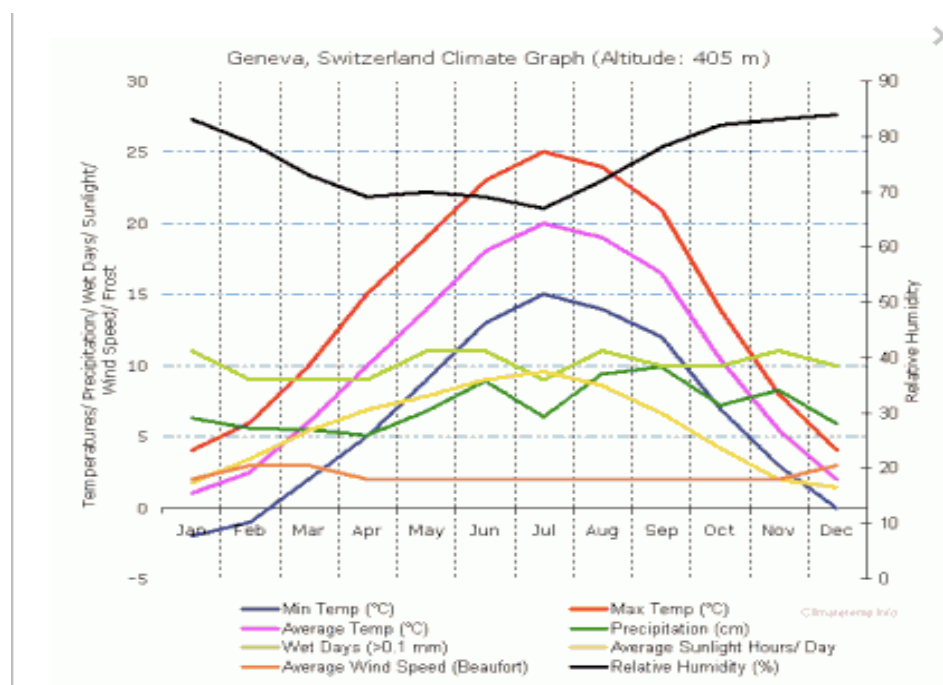
<b>Mon, June 25 9 am - 12:00</b>	<b>Tue, June 26 9 am - 12:00</b>	<b>Wed, June 27 9 am - 12:00</b>	<b>Thu, June 28 9 am - 12:00</b>	<b>Fri July 29</b>
<b>International Humanitarian Law</b>  [Prof. Antoine Bouvier]	<b>International Humanitarian Law</b>  [Prof. Antoine Bouvier]	<b>International Humanitarian Law</b>  [Prof. Antoine Bouvier]	<b>International Humanitarian Law</b>  [Prof. Antoine Bouvier]	<b>FREE</b>
<b>Break</b>	<b>Break</b>	<b>Break</b>	<b>Break</b>	
<b>Site Visit (Tentative)</b>		<b>Site Visit (Tentative)</b>		

### WEEK 4 (July 2-6) International IP Law

<b>Mon, July 2 9 am – 12:00</b>	<b>Tue, July 3 9 am - 12:00</b>	<b>Wed, July 4 9 am - 12:00</b>	<b>Thu, July 5 9 am - 12:00</b>	<b>Fri, July 6</b>
<b>International IP Law</b>  [Edward Kwakwa]	<b>International IP Law</b>  [Edward Kwakwa]	<b>International IP Law</b>  [Edward Kwakwa]	<b>International IP Law</b>  [Edward Kwakwa]	<b>[Take Home Examination Distributed- Due July 20, at noon PST]</b>
<b>Break</b>	<b>Break</b>	<b>Break</b>	<b>Break</b>	
<b>Site Visit (Tentative)</b>		<b>Site Visit (Tentative)</b>		



## PREPARING FOR GENEVA



### Climate, What to Wear

Geneva's relatively high altitude keeps the temperatures fairly pleasant in the summers. The hottest month is typically July, with temperatures in the high 70's, and you can expect some rain (although it is not the rainy season). It can get very chilly in the Alps. You will want to have an umbrella and/or raincoat, as well as some warm clothing if you plan to travel in the mountains. You will be walking a lot, so comfortable walking shoes are a "must." Carry them from the US, as things are very expensive in Switzerland.

We have several site visits planned (see "schedule" above). On all visits, you must wear "business-casual" attire. T-shirts, shorts, flip-flops are a "no no."

### Money, Credit Cards & Checks

The Swiss currency unit is the Swiss Franc CHF (not the Euro). At the time this newsletter is being written, the exchange rate is 1 US dollar is about 1 CHF. Since the exchange rate fluctuates from day to day, you want to check the rate daily before you decide to exchange money. Currently, most major U.S. Banks provide an on-line service by which any amount of foreign currency will be delivered to your local branch for you to pick up after debiting your account. This method may provide you with a superior exchange rate. Many ATM's will accept your debit cards, perhaps the easiest access to cash at a decent exchange rate.

Travelers' checks are easily exchanged for CHF, but personal checks are virtually useless in Switzerland. Hotels, tourist shops and restaurants generally accept such credit cards as American Express, VISA, Mastercard are widely accepted.

### Passport and I.D.

Switzerland extends visa-free entry to U.S. citizens staying in Switzerland for up to 90 days (consecutive or combined, within a six-month period) for tourist purposes. Your passport should be valid for at least three months beyond the period of stay. Switzerland is a party to the Schengen Agreement, which allows for free travel within a multi-country zone of Europe.

You may be asked to show proof of onward travel, so do carry your return ticket with you.

For updated entry requirements, please visit the US State Department website:

[http://travel.state.gov/travel/cis\\_pa\\_tw/cis/cis\\_1034.html#entry\\_requirements](http://travel.state.gov/travel/cis_pa_tw/cis/cis_1034.html#entry_requirements)

## **Health and Safety**

Make sure you pack medication, both prescription and over-the-counter. You may not find many familiar brand names such as Tylenol, and it will be difficult, if not impossible, to fill your medical prescriptions. If you wear glasses, have a copy of your prescription in case you lose or break your glasses.

You are covered under a Santa Clara University ACE travel insurance policy. I will hand out insurance cards to you at Orientation, but you can always find this information online at

<http://law.scu.edu/wp-content/uploads/ACE20Travel20Program20Info2.pdf>

## **Emergency**

Local emergency phone numbers are:

- 117      Police
- 118      Fire department
- 144      Emergency rescue service (Ambulance)

## **For consular emergencies you can call the US Embassy in Bern.**

Emergencies after hours, on weekends and holidays: 031-357-7777

FAX: 031-357-7280

E-mail: [bernacs@state.gov](mailto:bernacs@state.gov)

Address: U.S. Embassy, Sulgeneckstrasse 19, CH-3007, Bern

We will enroll you – all our summer abroad registrants, in the US State Department Smart Traveler Enrollment Program (STEP), which will provide you information in the event of an emergency or disaster.

<https://step.state.gov/step/>

However, it is imperative that you inform us of any changes in your contact information, and keep us apprised of where you are traveling, and how to get in touch with you or a contact person in the event of an emergency. We will discuss this further at the Orientation on June 15<sup>th</sup>.

## **Electricity**

Voltage and frequency are the same in most European countries:

- Voltage: 220 V
- Frequency: 50 Hz

## EVENTS

There are several fun events and festivals during our time in Geneva:

### Fete De La Musique

Location: Various

Dates: June 22-24, 2018

Website: <http://www.ville-ge.ch/culture/fm/>



Geneva's largest music festival features over 100 acts on display at more than 30 different outdoor venues spread throughout the city. There is something for everyone from jazz to reggae to trip-hop with a wide variety of food stalls to match. Most of the concerts are free of charge so you can dance your way through the streets from dusk until dawn and beyond.

### Montreux Jazz Festival

Location: Montreux

Dates: June 29 – July 14, 2018

Web/email: <http://www.montreuxjazzfestival.com/en>

THIS YEAR THE MONTREUX JAZZ FESTIVAL CELEBRATES ITS 50TH EDITION!!!

The Montreux Jazz festival was founded in 1966 and has been a European mainstay ever since, bringing an eclectic mix of artists year after year. There are free concerts and jam sessions along the lake every night and the intimate paid venues offer concertgoers a unique up-close experience with some of the world's biggest names.

### Lake Sailing Regatta

Location: Lake Geneva

Dates: June 8-10, 2018

Website: <http://www.boldormirabaud.com/boldor/ch/FR-CH/index.cfm>

The Rolex Bol d'Or is Europe's largest and most important sailing regatta with over 500 boats in competition annually. Hosted by the Societe Nautique de Geneve, the regatta has received increased attention on the world stage since the Swiss team Alinghi took the America's cup in 2004.

### American Independence Day

Organized by the American International Club of Geneva, the event features the largest American Independence Day fireworks display outside of the United States. Live music and shows for children are organized throughout the day at the Centre Sportif du Bout du Monde.

Web/email: [www.amclub.ch](http://www.amclub.ch)

**Tourism and information on Switzerland is available at:**

<http://www.myswitzerland.com/en/home.html>

<http://www.meteo.ch/index.php?pid=18&l=fr> (only in german and french)

<http://www.swissworld.org/en/>

<http://www.image-switzerland.ch/index.php?id=10&L=1>

## IMPORTANT CONTACT INFORMATION

**Professor Claudia Josi** – Program director, on-site from June 10 - July 7, 2018. I can be reached via phone while in Switzerland at +41 79 7630057, or by email at [cjosi@scu.edu](mailto:cjosi@scu.edu).

**Ms. Carly Koebel** – Sr. Program Manager for the Center for Global Law and Policy at Santa Clara University Law School. She can be reached by email at [cglp@scu.edu](mailto:cglp@scu.edu) or by telephone at (408) 551-1955.

### **Webster University Geneva**

Ms. Gaël Baboulaz

Student Services & Residential Life Assistant

Phone # +41 22 959 8004

E-Mail: [baboulaz@webster.ch](mailto:baboulaz@webster.ch)

**IMPORTANT NOTE!** Any inquiries between now and June 10 should be directed to Claudia Josi. Ms. Baboulaz will be a local contact person during the time we are in Geneva.

### **For emergencies in Switzerland call the US Embassy in Bern**

Emergencies: 031-357-7011

Emergencies after hours, on weekends and holidays: 031-357-7777

FAX: 031-357-7280

E-mail: [bernacs@state.gov](mailto:bernacs@state.gov)

Address: U.S. Embassy, Sulgeneckstrasse 19, CH-3007, Bern

**Welcome again, and see you in Geneva!**

